

ACL Laboratories Respiratory Virus Activity Report

Updated 4/16/2025



Now part of  ADVOCATEHEALTH



Respiratory Pathogens Monthly % Positivity - May-24 thru Apr-25

MONTH - YEAR	Flu A % Positive	% Flu A H1N1 Subtype*	% Flu A 2009 H1N1 Subtype*	% Flu A H3N2 Subtype*	% Flu A No Subtype*	Flu B % Positive	RSV A/B % Positive	HPIV-1 % Positive	HPIV-2 % Positive	HPIV-3 % Positive	HPIV-4 % Positive	HCOV 229E % Positive	HCOV NL63 % Positive	HCOV OC43 % Positive	HCOV HKU1 % Positive	SARS-CoV-2 % Positive	HMPV % Positive	Rhinovirus / Enterovirus % Positive	Adenovirus % Positive	C. pneumoniae % Positive	M. pneumoniae % Positive	B. pertussis % Positive	B. parapertussis % Positive	L. pneumophila # Positive
Apr-25	1.1%	0.0%	66.7%	22.2%	11.1%	5.6%	1.9%	0.4%	0.1%	4.2%	0.0%	0.0%	0.3%	2.9%	1.6%	3.4%	7.9%	15.0%	2.4%	0.1%	0.9%	0.1%	0.0%	0
Mar-25	6.8%	0.0%	65.9%	28.0%	6.1%	5.7%	3.6%	0.2%	0.1%	1.4%	0.1%	0.1%	0.5%	4.1%	2.5%	4.2%	5.4%	10.9%	1.5%	0.0%	0.5%	0.1%	0.0%	0
Feb-25	25.1%	0.0%	72.9%	22.0%	5.1%	1.4%	5.1%	0.3%	0.1%	0.5%	0.2%	0.1%	1.4%	3.6%	1.6%	5.2%	2.1%	6.5%	1.1%	0.0%	1.1%	0.1%	0.0%	1
Jan-25	23.5%	0.0%	62.1%	32.7%	5.2%	0.3%	7.1%	0.4%	0.1%	0.2%	0.4%	0.1%	1.9%	1.9%	0.9%	6.6%	1.3%	6.2%	0.9%	0.1%	1.6%	0.1%	0.0%	1
Dec-24	11.1%	0.0%	63.5%	34.0%	2.5%	0.2%	9.1%	0.8%	0.1%	0.2%	0.9%	0.1%	2.7%	0.8%	0.4%	6.4%	0.8%	13.5%	1.5%	0.0%	2.8%	0.2%	0.0%	0
Nov-24	1.4%	0.0%	57.1%	35.7%	7.1%	0.0%	3.0%	0.7%	0.1%	0.2%	2.5%	0.0%	1.4%	0.2%	0.1%	4.0%	0.2%	22.1%	1.9%	0.1%	4.2%	0.3%	0.0%	0
Oct-24	0.4%	0.0%	37.5%	62.5%	0.0%	0.1%	0.5%	0.6%	0.1%	0.2%	3.5%	0.0%	0.7%	0.1%	0.1%	4.6%	0.2%	24.3%	1.8%	0.2%	5.1%	0.2%	0.0%	0
Sep-24	0.3%	0.0%	70.0%	30.0%	0.0%	0.0%	0.2%	0.2%	0.1%	0.5%	1.9%	0.1%	0.6%	0.0%	0.0%	10.5%	0.3%	27.0%	1.7%	0.2%	3.8%	0.3%	0.0%	2
Aug-24	0.4%	0.0%	50.0%	50.0%	0.0%	0.1%	0.2%	0.2%	0.1%	1.2%	1.8%	0.0%	0.7%	0.0%	0.0%	16.1%	0.5%	14.2%	1.6%	0.1%	2.5%	0.3%	0.0%	0
Jul-24	0.5%	0.0%	33.3%	50.0%	16.7%	0.0%	0.1%	0.2%	0.0%	4.1%	1.3%	0.2%	0.9%	0.1%	0.0%	13.1%	1.3%	13.4%	1.8%	0.0%	1.3%	0.4%	0.0%	0
Jun-24	0.6%	0.0%	55.6%	33.3%	11.1%	0.1%	0.2%	0.1%	0.0%	9.3%	0.5%	0.2%	0.8%	0.1%	0.0%	5.9%	4.0%	16.5%	2.6%	0.0%	0.5%	0.4%	0.0%	0
May-24	0.8%	0.0%	50.0%	50.0%	0.0%	0.8%	0.5%	0.1%	0.0%	8.3%	0.3%	0.5%	0.6%	0.3%	0.2%	2.7%	7.0%	15.5%	2.4%	0.0%	0.3%	0.1%	0.0%	1

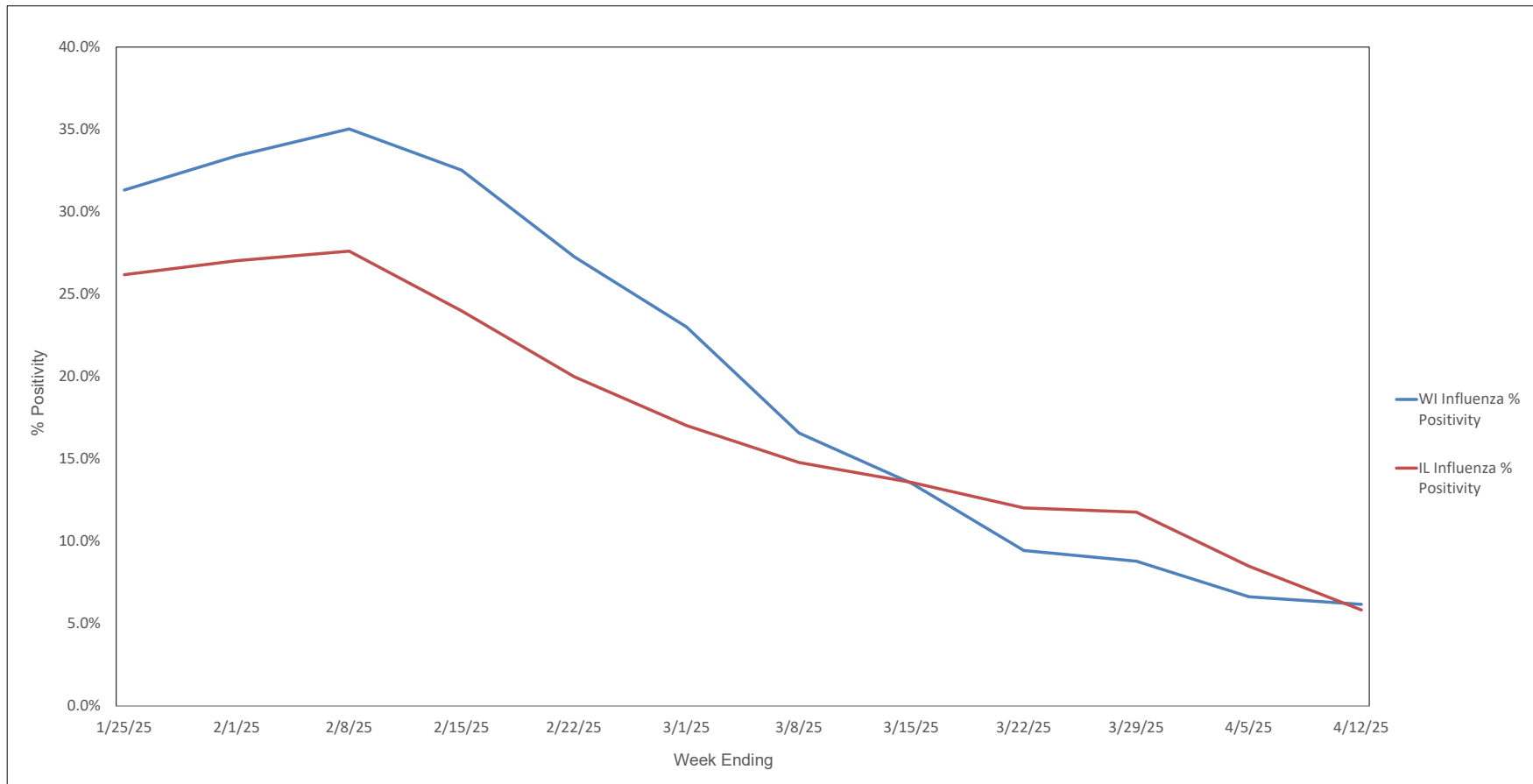
* Represents the % of Influenza A positive samples that are positive for each subtype; subtyping is not performed on all Influenza A specimens (only those specimens tested with the Rapid Respiratory Pathogen Panel)

Flu A = Influenza Type A, Flu B = Influenza Type B, RSV A/B = Respiratory Syncytial Virus Type A/B (not differentiated), HPIV = Human Parainfluenza Virus, HCOV = Human Coronavirus, HMPV = Human Metapneumovirus



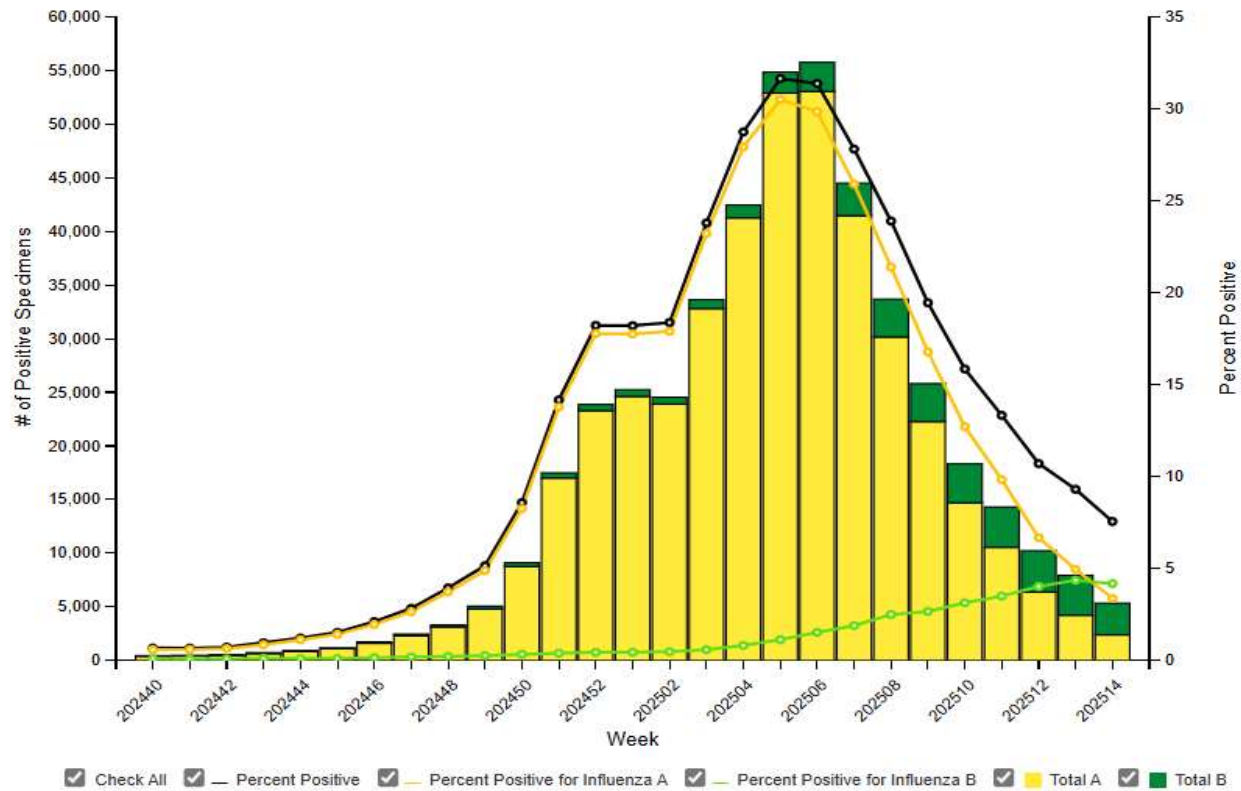
Weekly Influenza PCR % Positivity by State -

1/25/25 thru 4/12/25

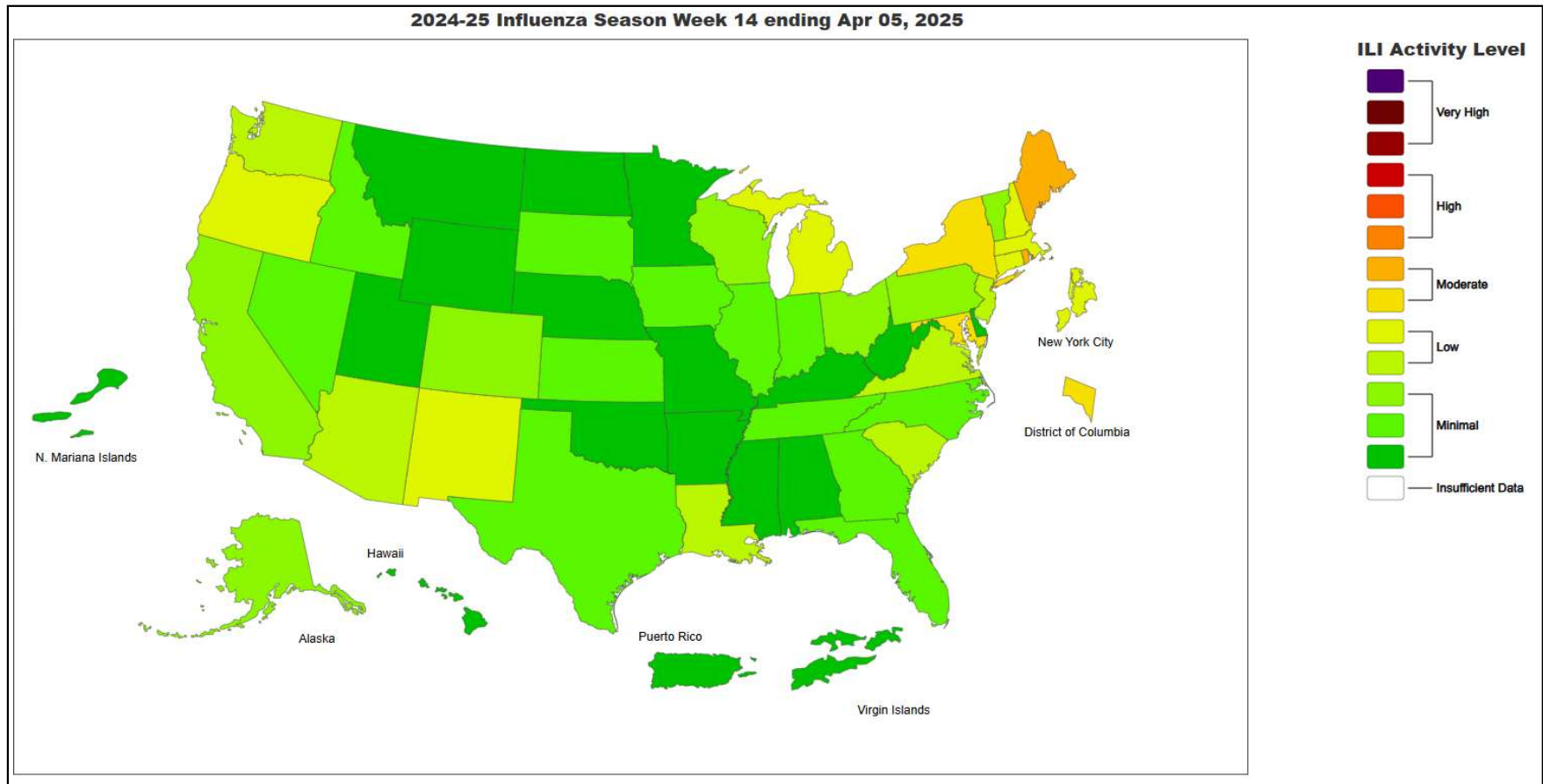


National Influenza Positivity Rates (Data from CDC)

**Influenza Positive Tests Reported to CDC by Clinical Laboratories,
National Summary, 2024-25 Season, week ending Apr 05, 2025**

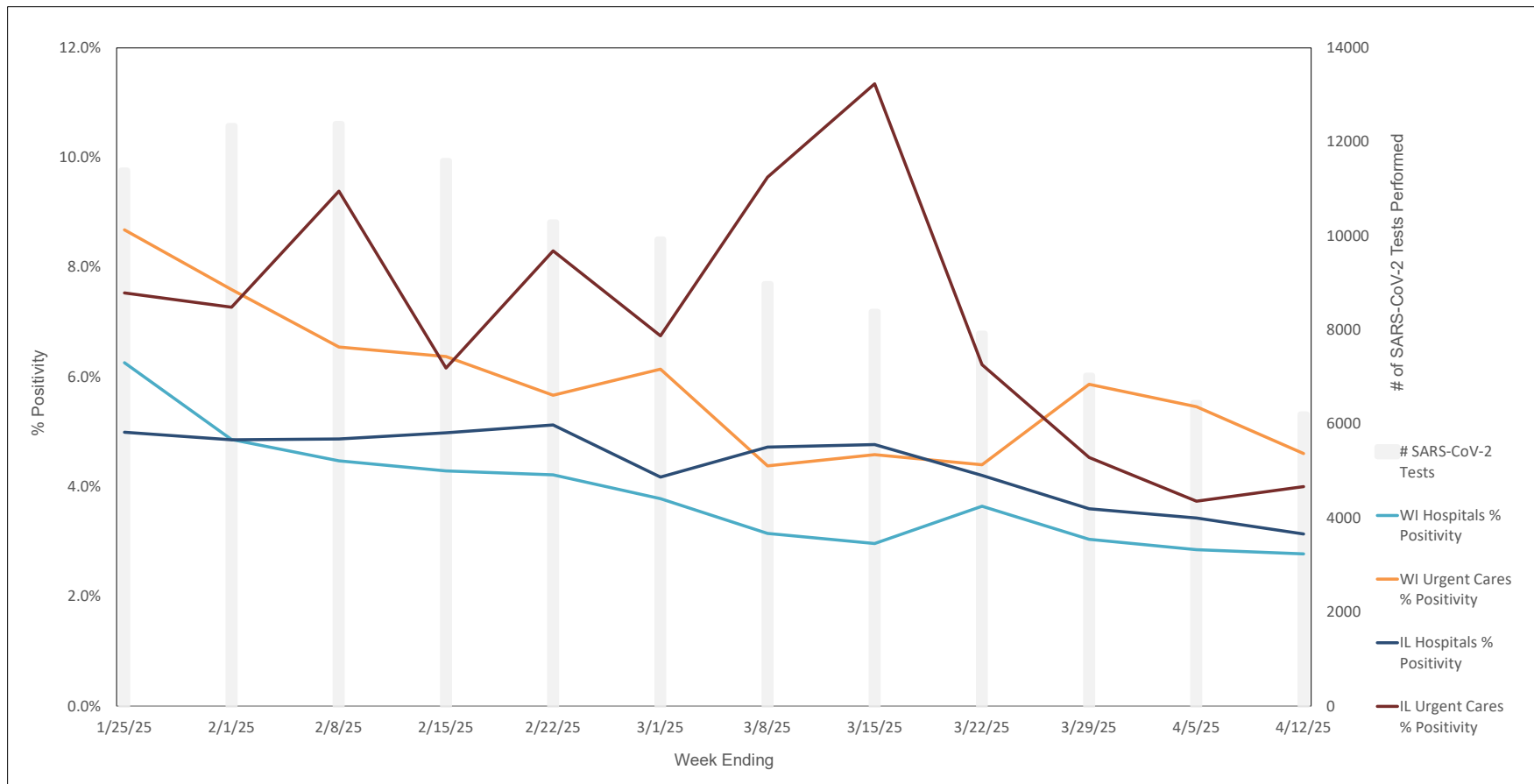


National Influenza Positivity Rates (Data from CDC)



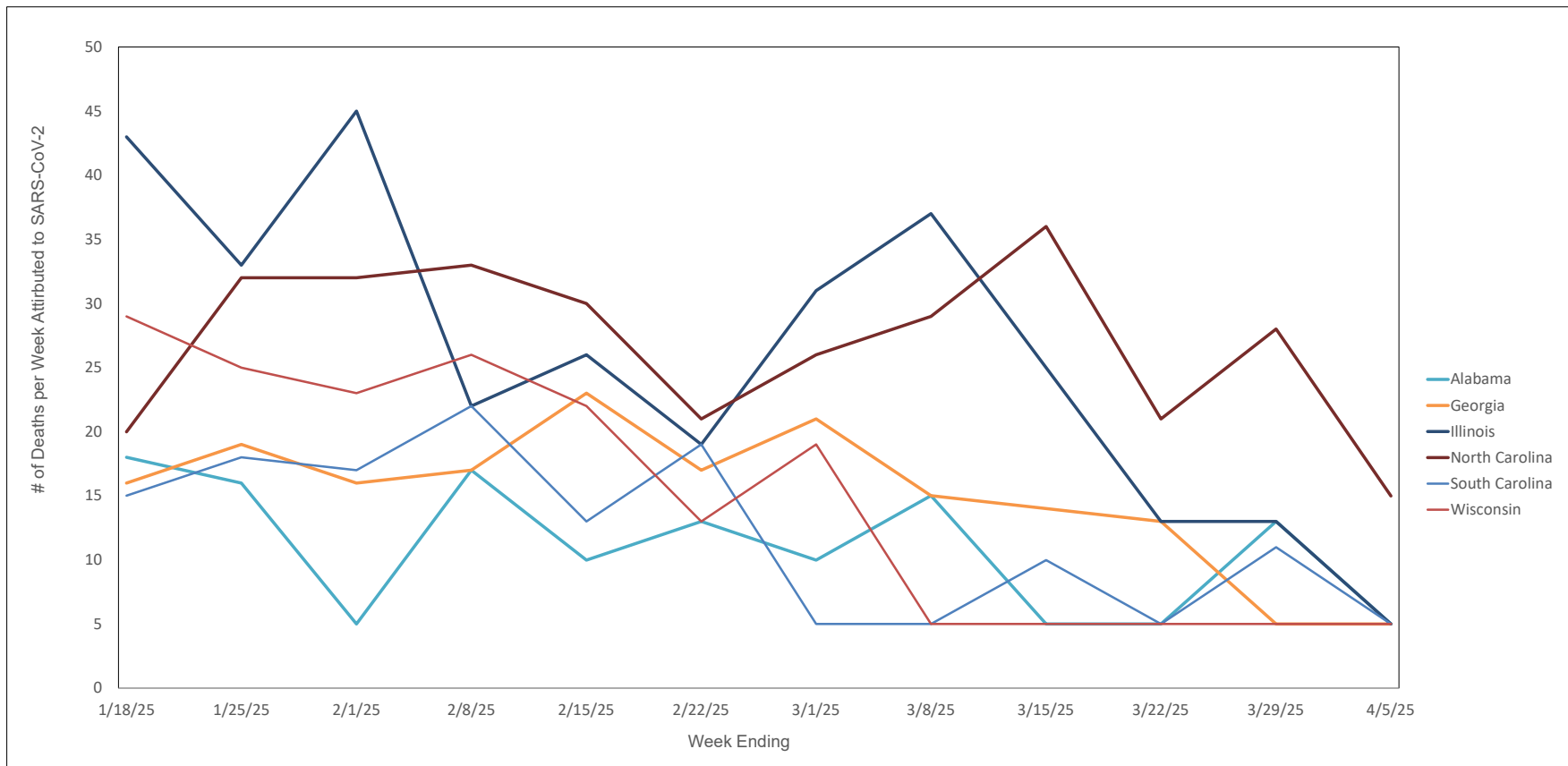


Weekly SARS-CoV-2 PCR % Positivity Rate - 1/25/25 thru 4/12/25





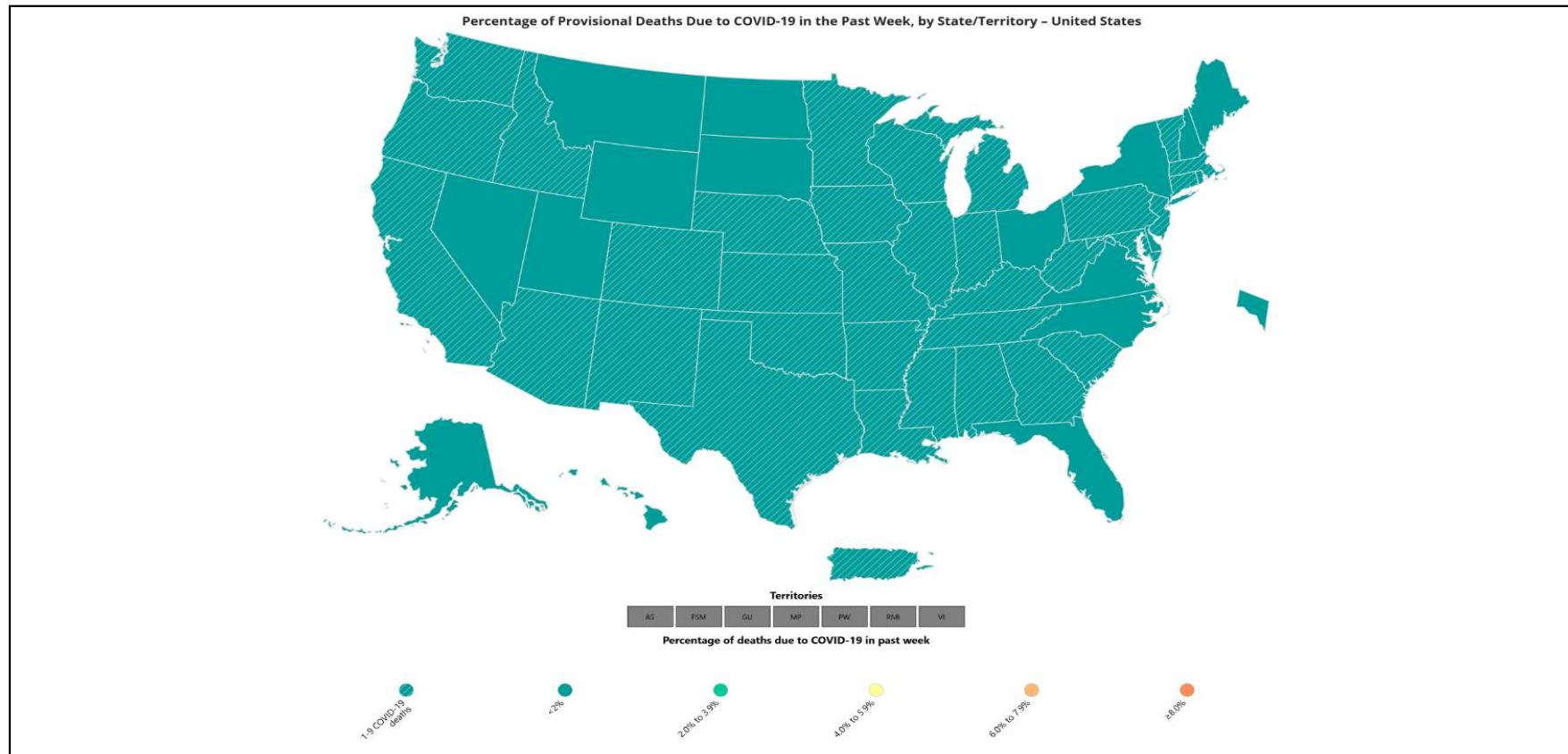
Weekly Deaths Attributed to SARS-CoV-2 by State - 1/18/25 thru 4/5/25



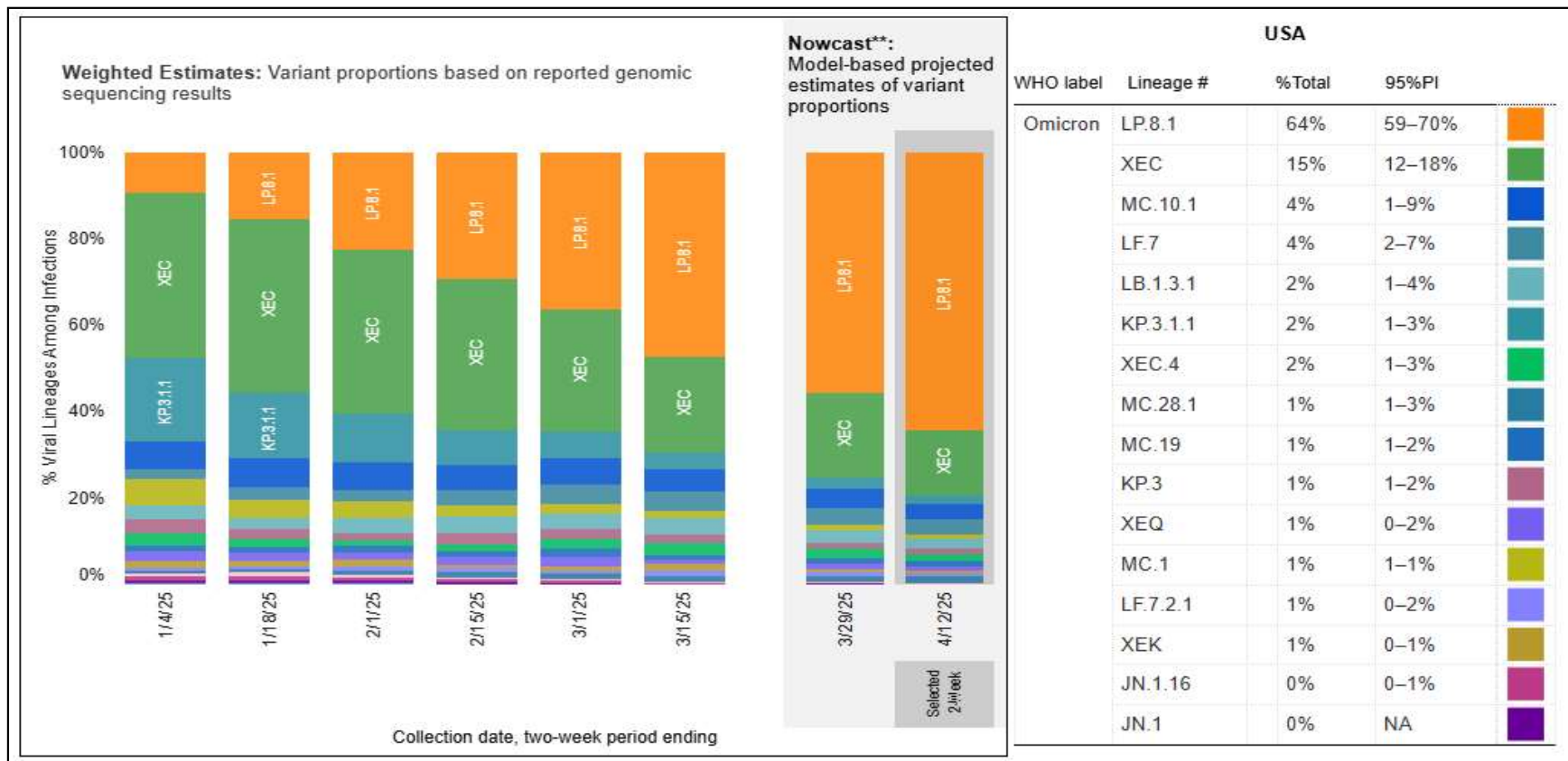
States do not report actual # of deaths when the # ranges from 1 - 9. In these cases the # of deaths is recorded on this graph as 5.

https://covid.cdc.gov/covid-data-tracker/#trends_weeklydeaths_select_00

% of Weekly Deaths Attributed to COVID-19; Week Ending 4/5/25



Most Prevalent SARS-CoV-2 Strains Circulating in the US thru 4/12/25 Data from CDC's Nowcast** Modelling

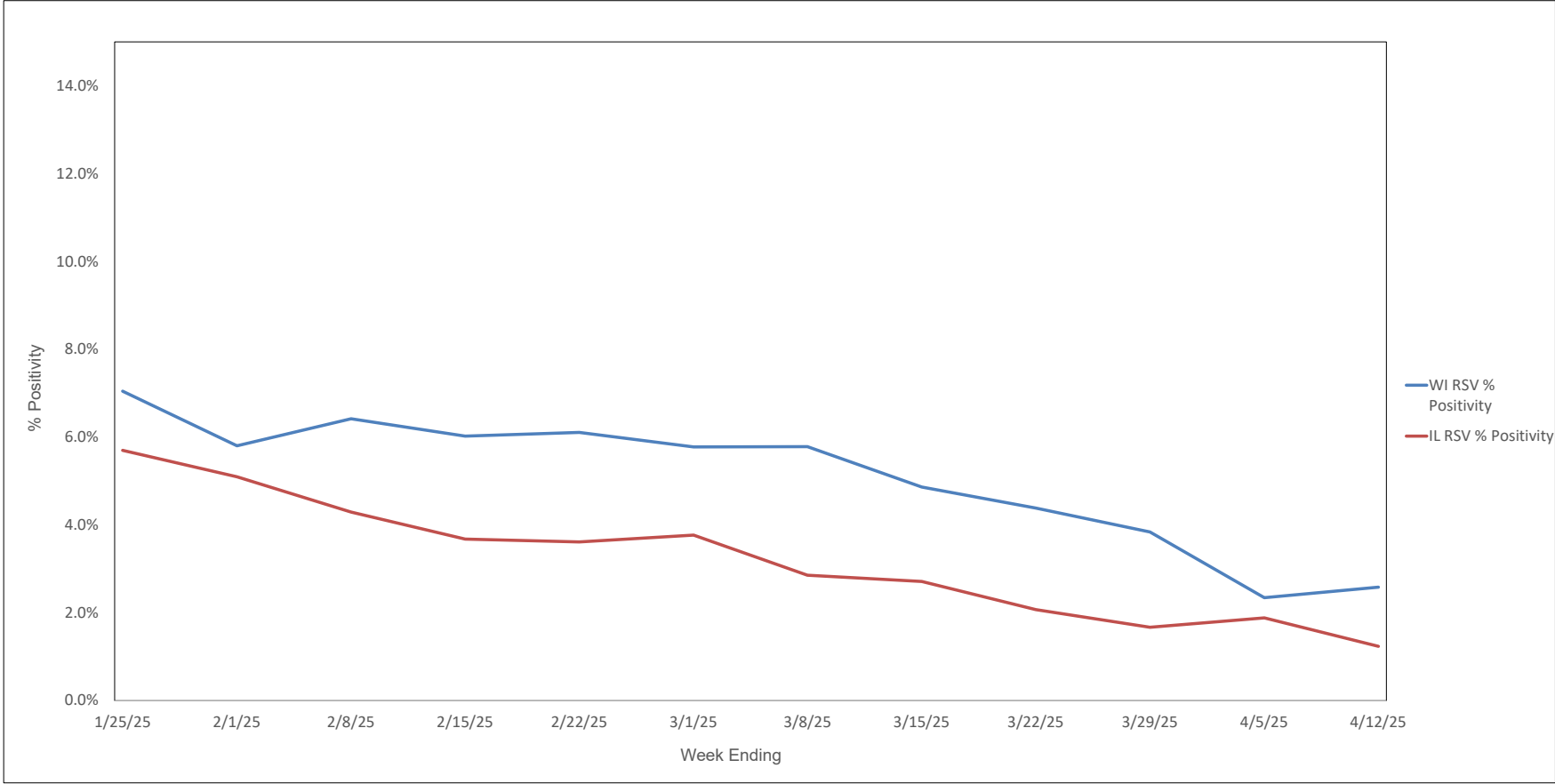


CDC uses **Nowcast model that estimates more recent proportions of circulating variants (actual sequencing data is typically delayed for 2 weeks).

<https://covid.cdc.gov/covid-data-tracker/#variant-proportions>

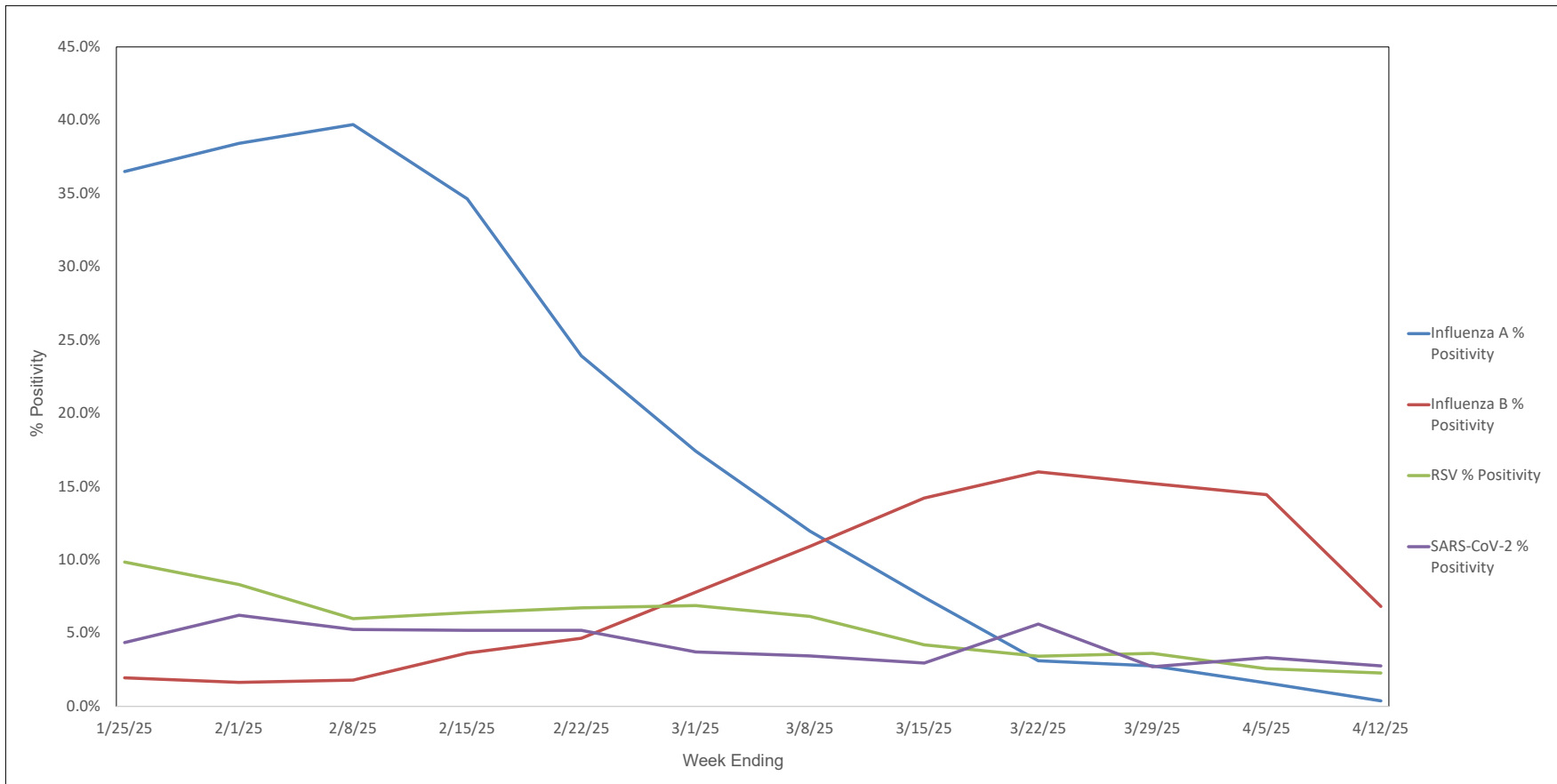


Weekly RSV PCR % Positivity by State - 1/25/25 thru 4/12/25





Advocate Children's Hospital Influenza A, Influenza B, RSV, and SARS-CoV-2 PCR Positivity Rates - 1/25/25 thru 4/12/25





AAH WI Hospitals (patients < 18 yrs old) Influenza A, Influenza B, RSV, and SARS-CoV-2 PCR Positivity Rates - 1/25/25 thru 4/12/25

