

# ACL Laboratories Respiratory Virus Activity Report

Updated 10/15/2025



Now part of  ADVOCATEHEALTH



Now part of ADVOCATEHEALTH

## Respiratory Pathogens Monthly % Positivity - Nov-24 thru Oct-25

MONTH - YEAR	Flu A % Positive	% Flu A H1N1 Subtype*	% Flu A 2009 H1N1 Subtype*	% Flu A H3N2 Subtype*	% Flu A No Subtype*	Flu B % Positive	RSV A/B % Positive	HPIV-1 % Positive	HPIV-2 % Positive	HPIV-3 % Positive	HPIV-4 % Positive	HCOV 229E % Positive	HCOV NL63 % Positive	HCOV OC43 % Positive	HCOV HKU1 % Positive	SARS-CoV-2 % Positive	HMPV % Positive	Rhinovirus / Enterovirus % Positive	Adenovirus % Positive	C. pneumoniae % Positive	M. pneumoniae % Positive	B. pertussis % Positive	B. parapertussis % Positive	L. pneumophila # Positive
Oct-25	0.5%	0.0%	0.0%	100.0%	0.0%	0.1%	0.3%	3.1%	2.8%	0.3%	0.4%	0.2%	0.0%	0.1%	0.0%	3.1%	0.5%	26.5%	1.2%	0.3%	2.1%	0.2%	0.0%	0
Sep-25	0.3%	0.0%	62.5%	37.5%	0.0%	0.0%	0.1%	1.1%	1.6%	0.4%	0.1%	0.2%	0.1%	0.2%	0.1%	6.6%	0.4%	29.1%	0.9%	0.1%	1.3%	0.2%	0.1%	1
Aug-25	0.3%	0.0%	100.0%	0.0%	0.0%	0.0%	0.1%	1.0%	1.0%	0.7%	0.2%	0.1%	0.0%	0.0%	0.0%	6.7%	0.6%	18.3%	1.3%	0.1%	1.4%	0.1%	0.0%	0
Jul-25	0.2%	0.0%	100.0%	0.0%	0.0%	0.0%	0.1%	0.8%	1.0%	3.6%	0.0%	0.1%	0.0%	0.0%	0.0%	3.6%	1.8%	10.1%	1.4%	0.0%	0.9%	0.2%	0.0%	0
Jun-25	0.2%	0.0%	50.0%	0.0%	50.0%	0.2%	0.2%	0.9%	0.5%	7.4%	0.0%	0.0%	0.0%	0.1%	0.1%	1.9%	2.9%	16.3%	1.6%	0.0%	0.5%	0.1%	0.0%	1
May-25	0.3%	0.0%	100.0%	0.0%	0.0%	1.6%	0.4%	1.0%	0.2%	9.2%	0.1%	0.4%	0.1%	0.5%	0.3%	2.1%	6.2%	18.6%	1.6%	0.1%	0.4%	0.0%	0.0%	0
Apr-25	0.8%	0.0%	58.3%	33.3%	8.3%	5.1%	1.6%	0.4%	0.1%	5.2%	0.0%	0.0%	0.2%	2.0%	1.1%	3.1%	8.2%	16.3%	2.0%	0.1%	0.7%	0.1%	0.0%	1
Mar-25	6.8%	0.0%	65.9%	28.0%	6.1%	5.7%	3.6%	0.2%	0.1%	1.4%	0.1%	0.1%	0.5%	4.1%	2.5%	4.2%	5.4%	10.9%	1.5%	0.0%	0.5%	0.1%	0.0%	0
Feb-25	25.1%	0.0%	72.9%	22.0%	5.1%	1.4%	5.1%	0.3%	0.1%	0.5%	0.2%	0.1%	1.4%	3.6%	1.6%	5.2%	2.1%	6.5%	1.1%	0.0%	1.1%	0.1%	0.0%	1
Jan-25	23.5%	0.0%	62.1%	32.7%	5.2%	0.3%	7.1%	0.4%	0.1%	0.2%	0.4%	0.1%	1.9%	1.9%	0.9%	6.6%	1.3%	6.2%	0.9%	0.1%	1.6%	0.1%	0.0%	1
Dec-24	11.1%	0.0%	63.5%	34.0%	2.5%	0.2%	9.1%	0.8%	0.1%	0.2%	0.9%	0.1%	2.7%	0.8%	0.4%	6.4%	0.8%	13.5%	1.5%	0.0%	2.8%	0.2%	0.0%	0
Nov-24	1.4%	0.0%	57.1%	35.7%	7.1%	0.0%	3.0%	0.7%	0.1%	0.2%	2.5%	0.0%	1.4%	0.2%	0.1%	4.0%	0.2%	22.1%	1.9%	0.1%	4.2%	0.3%	0.0%	0

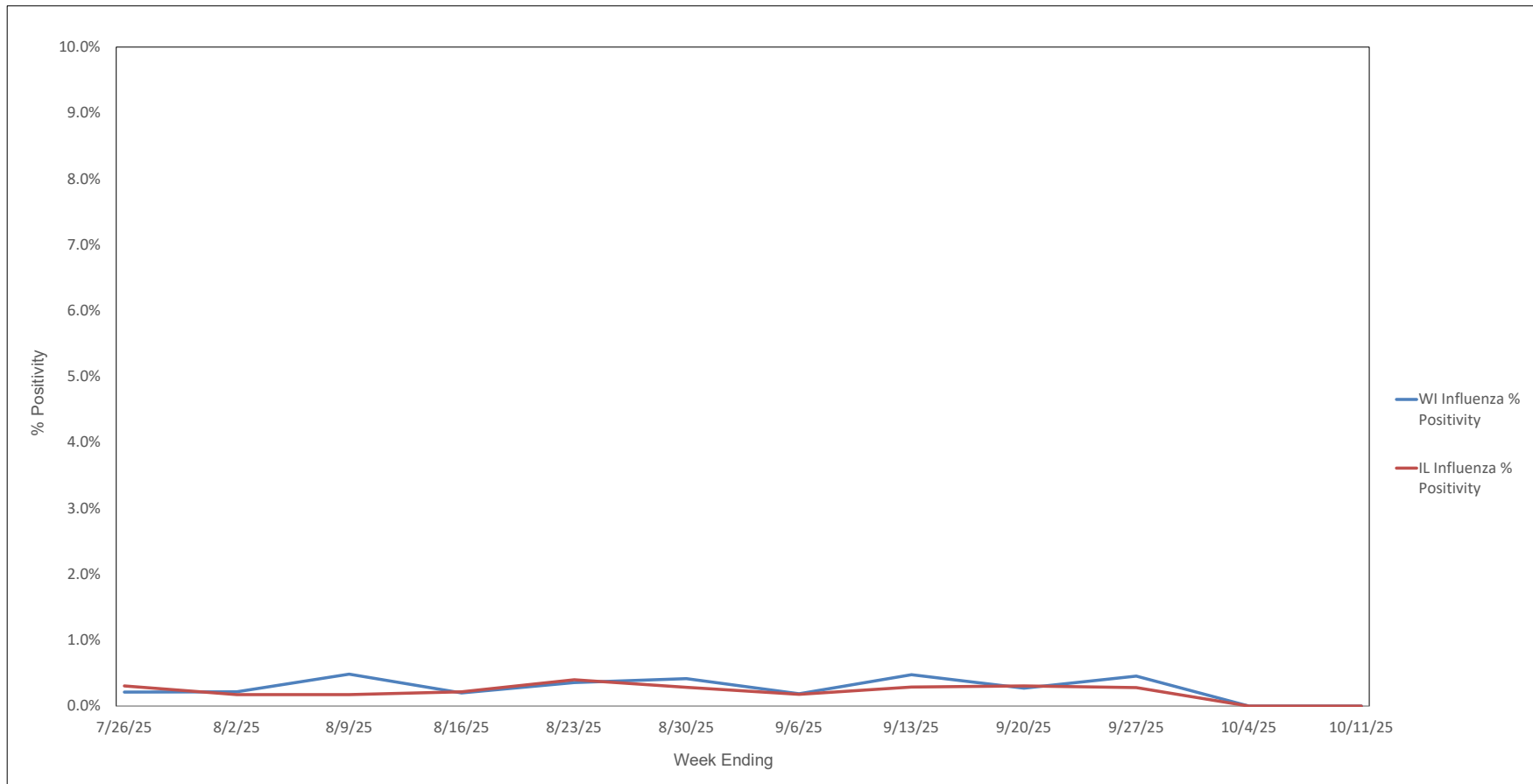
\* Represents the % of Influenza A positive samples that are positive for each subtype; subtyping is not performed on all Influenza A specimens (only those specimens tested with the Rapid Respiratory Pathogen Panel)

Flu A = Influenza Type A, Flu B = Influenza Type B, RSV A/B = Respiratory Syncytial Virus Type A/B (not differentiated), HPIV = Human Paraminfluenza Virus, HCOV = Human Coronavirus, HMPV = Human Metapneumovirus



Now part of ADVOCATEHEALTH

## Weekly Influenza PCR % Positivity by State - 7/26/25 thru 10/11/25

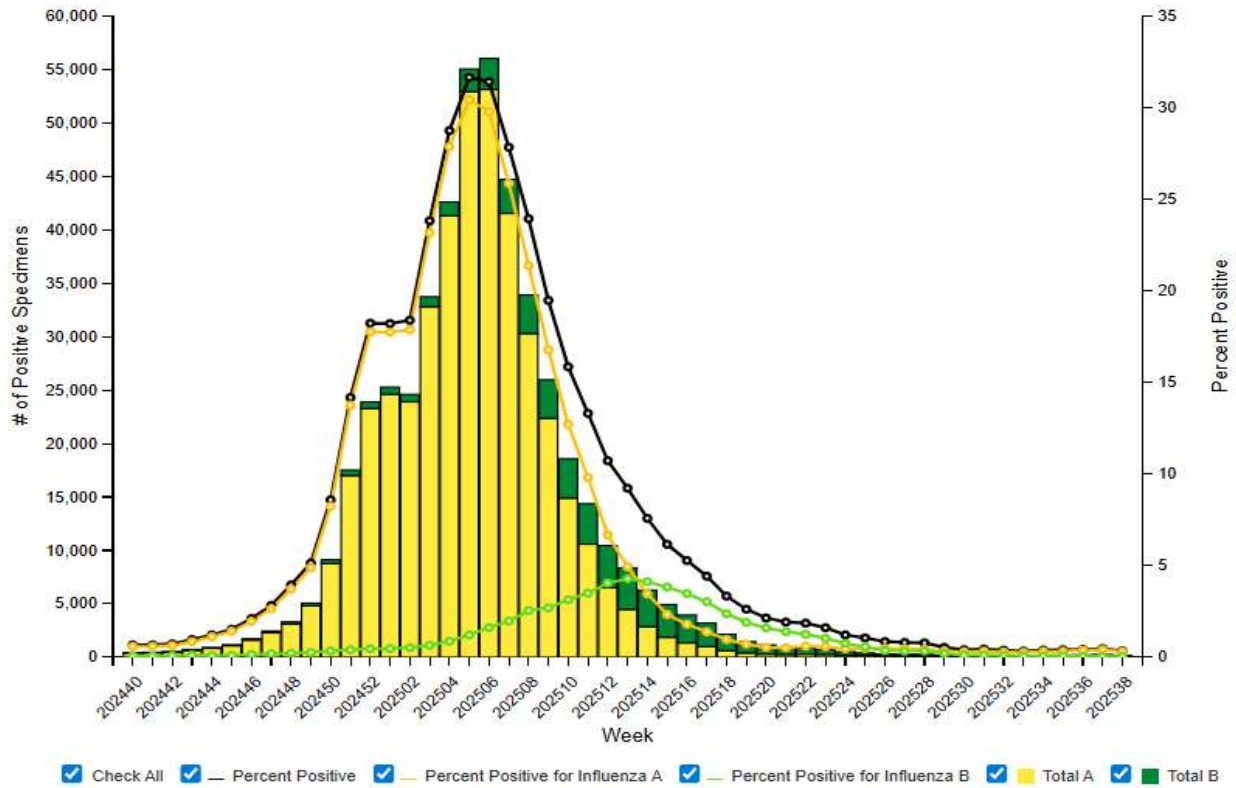




# National Influenza Positivity Rates (Data from CDC)

HAS NOT BEEN UPDATED SINCE 9/20/2025 DUE TO FEDERAL GOVERNMENT STAFFING

### Influenza Positive Tests Reported to CDC by Clinical Laboratories, National Summary, 2024-25 Season, week ending Sep 20, 2025

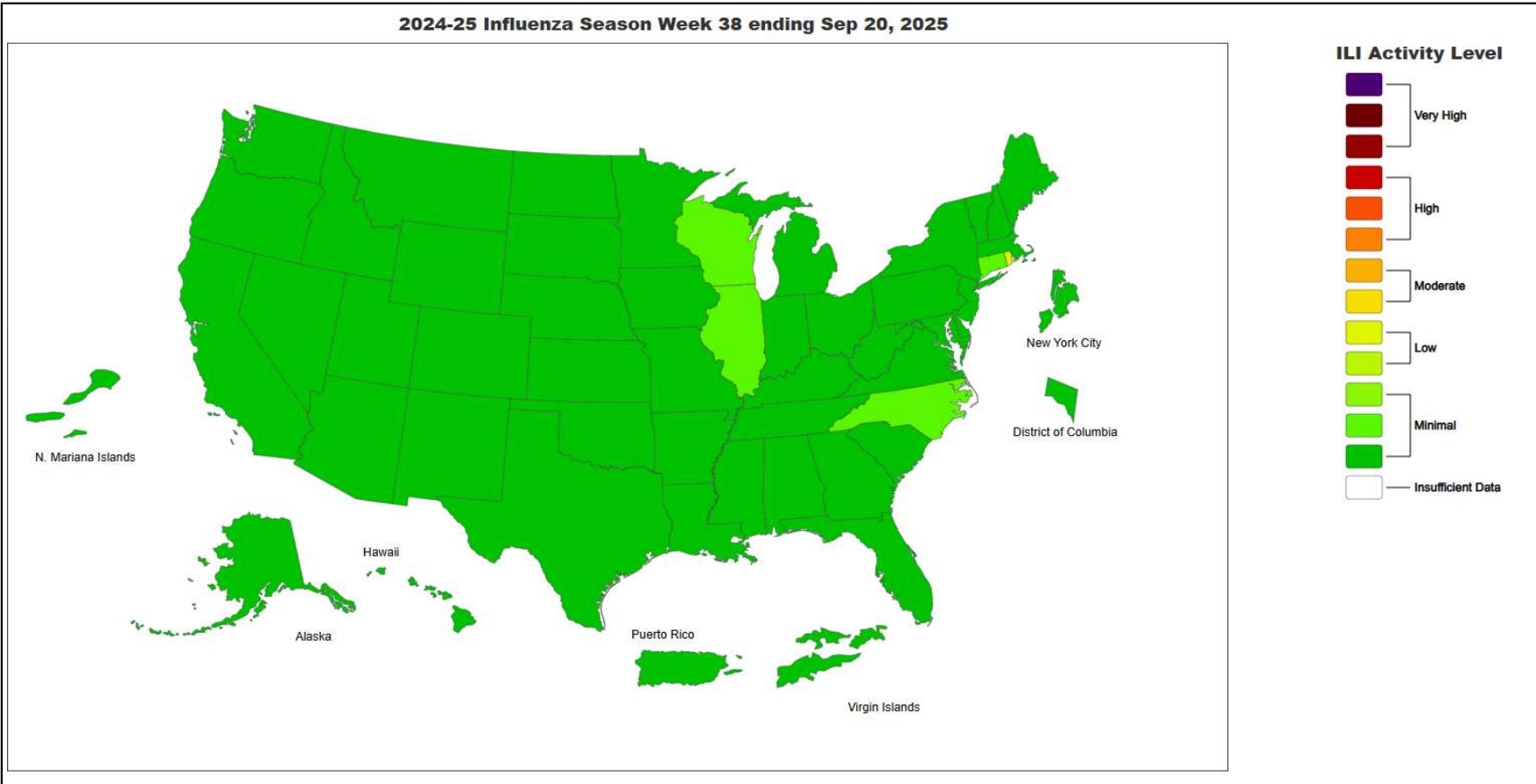




# National Influenza Positivity Rates (Data from CDC)

HAS NOT BEEN UPDATED SINCE 9/20/2025 DUE TO FEDERAL GOVERNMENT STAFFING

2024-25 Influenza Season Week 38 ending Sep 20, 2025



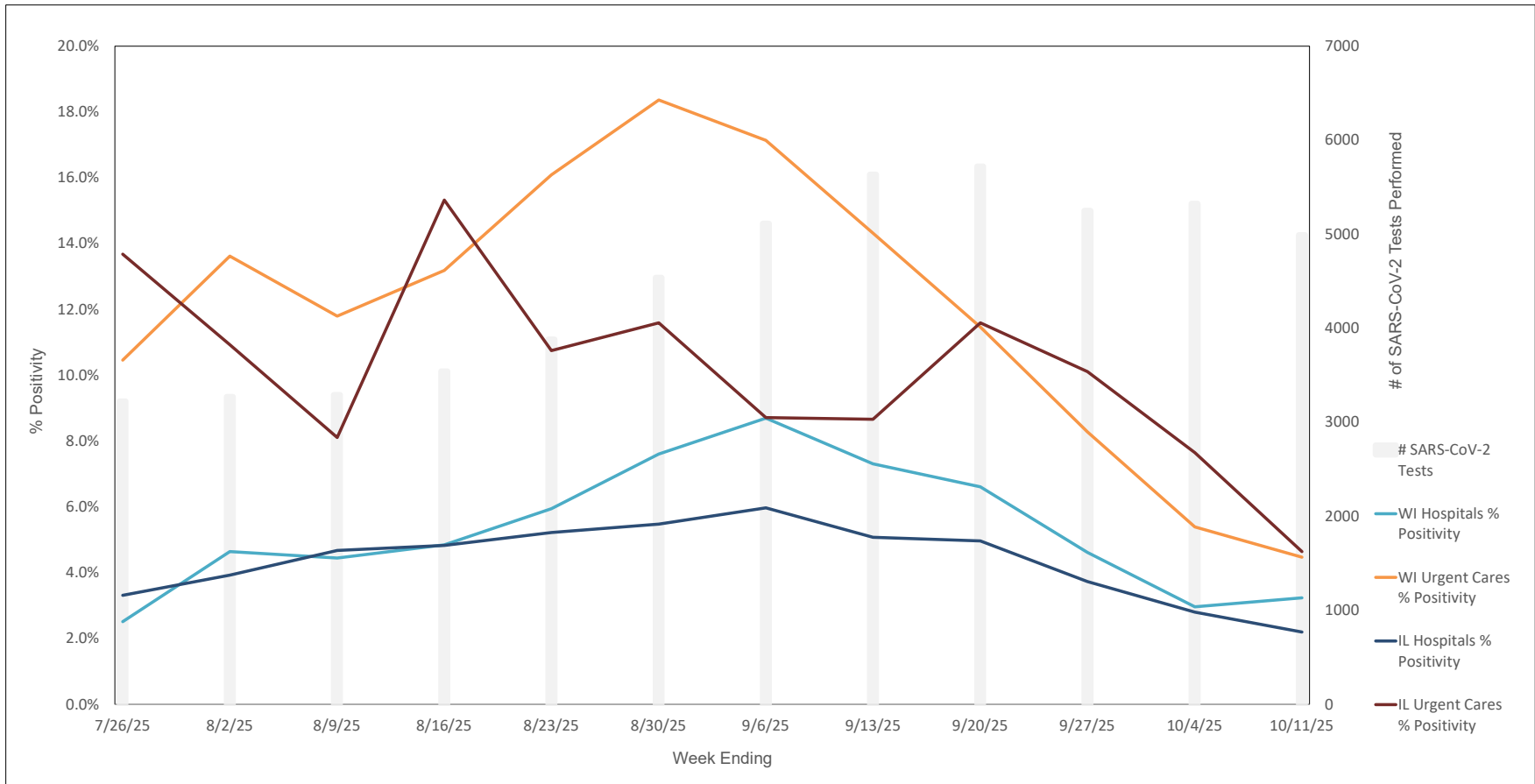
<https://gis.cdc.gov/grasp/fluview/main.html>



Now part of ADVOCATEHEALTH

# Weekly SARS-CoV-2 PCR % Positivity Rate -

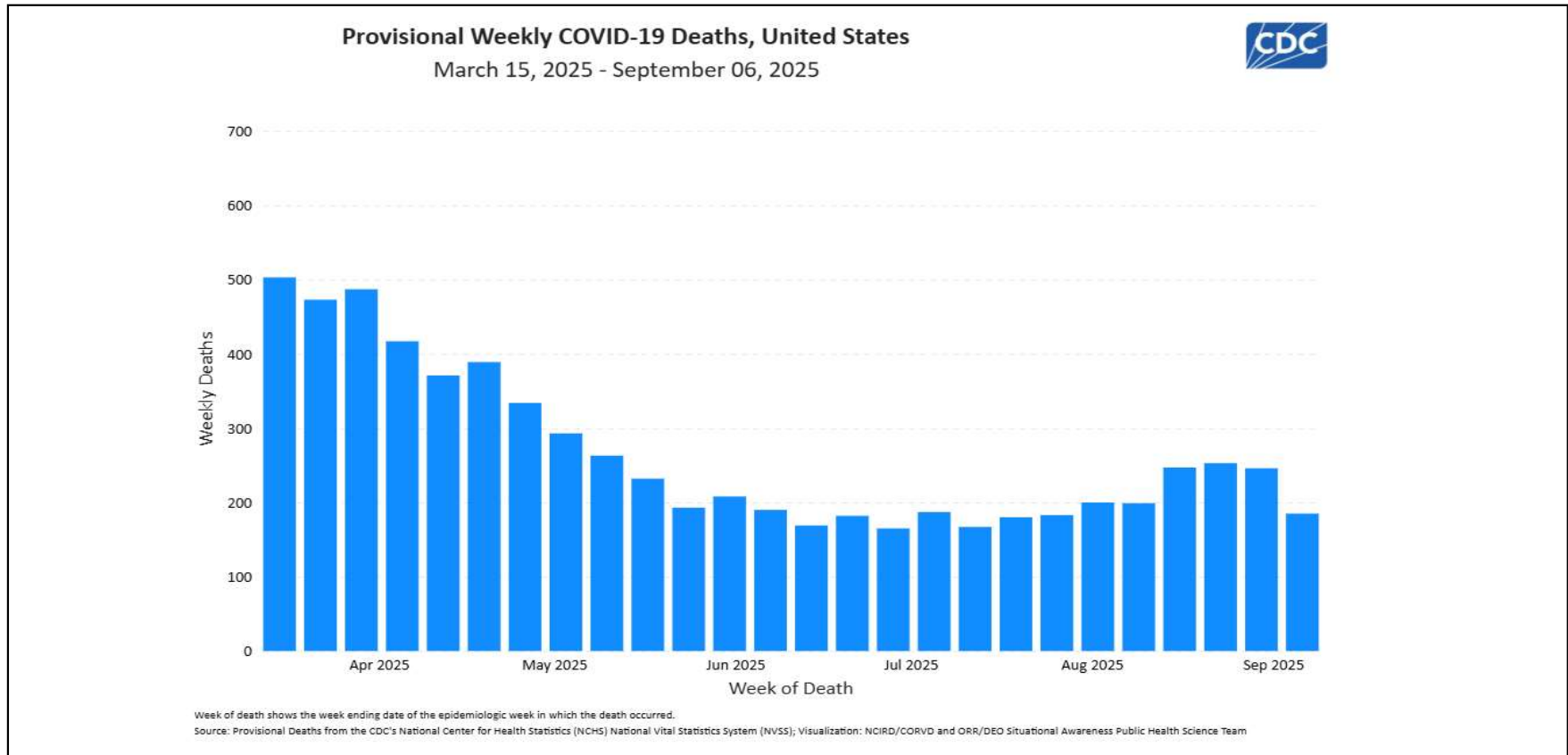
7/26/25 thru 10/11/25





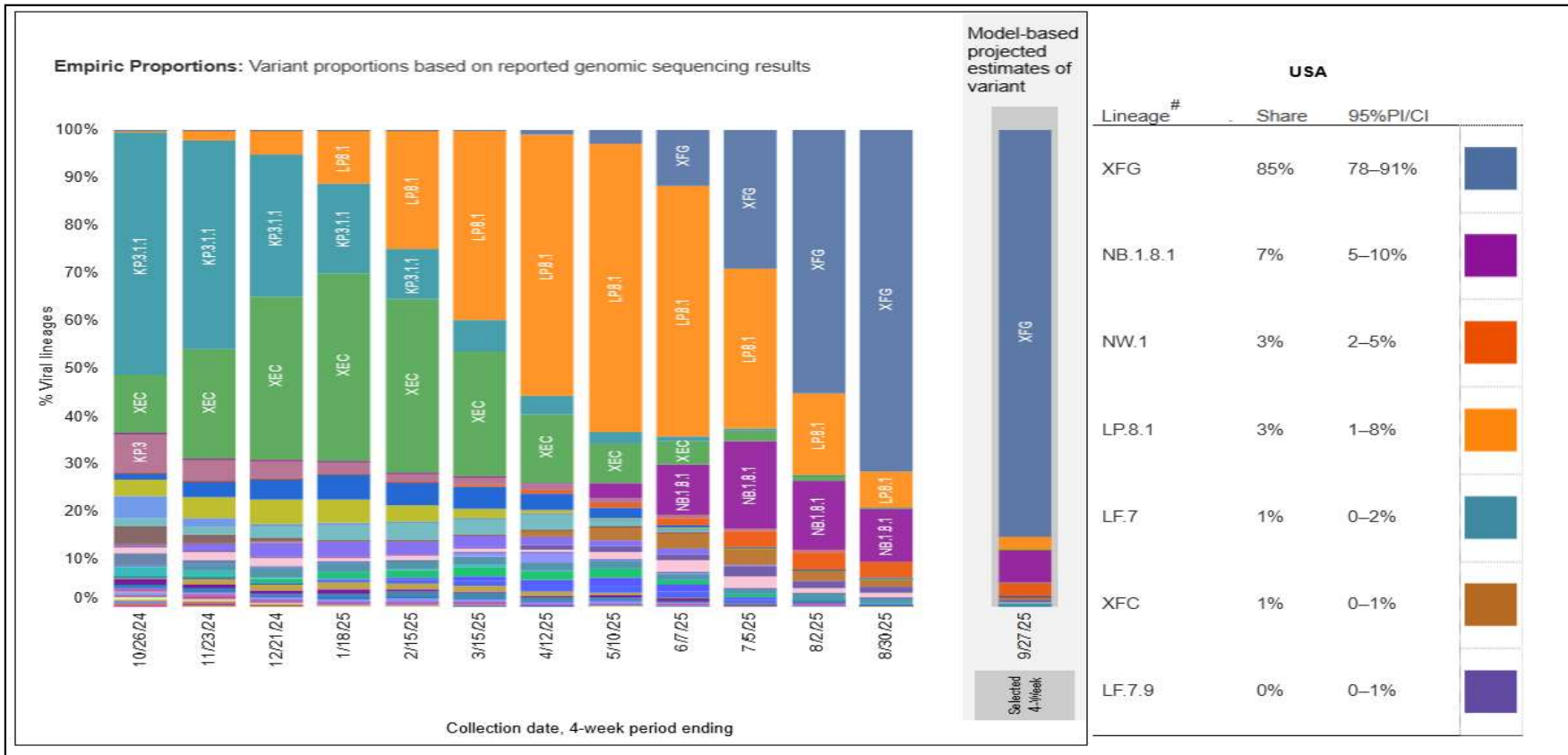
## % of Weekly Deaths in US Attributed to COVID-19 by Week

HAS NOT BEEN UPDATED SINCE 9/6/2025 DUE TO FEDERAL GOVERNMENT STAFFING





## Most Prevalent SARS-CoV-2 Strains Circulating in the US thru 10/11/25 Data from CDC's Nowcast\*\* Modelling (last updated 9/27/25)



\*\*CDC uses Nowcast model that estimates more recent proportions of circulating variants (actual sequencing data is typically delayed for 2 weeks).

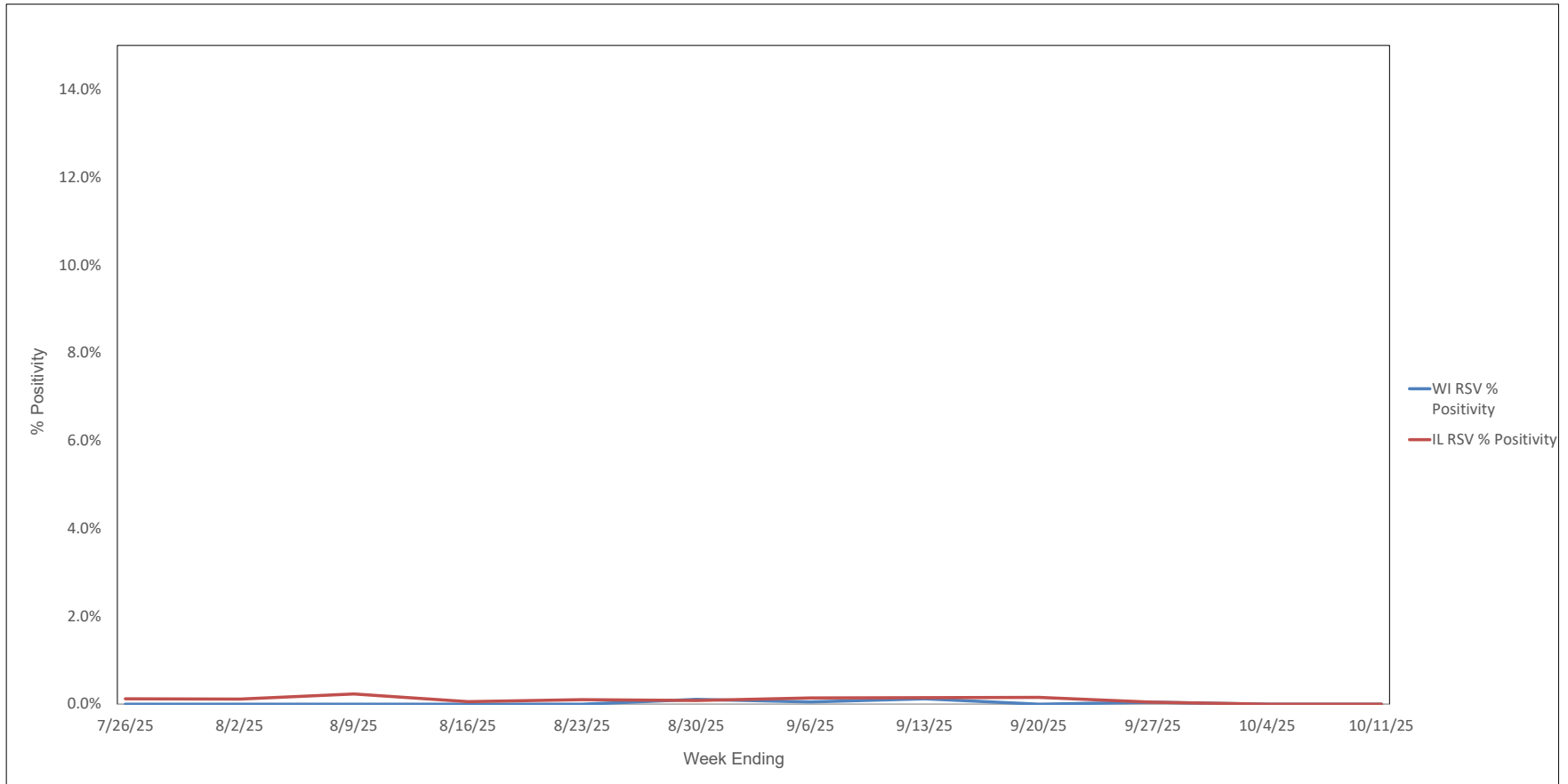
<https://covid.cdc.gov/covid-data-tracker/#variant-proportions>





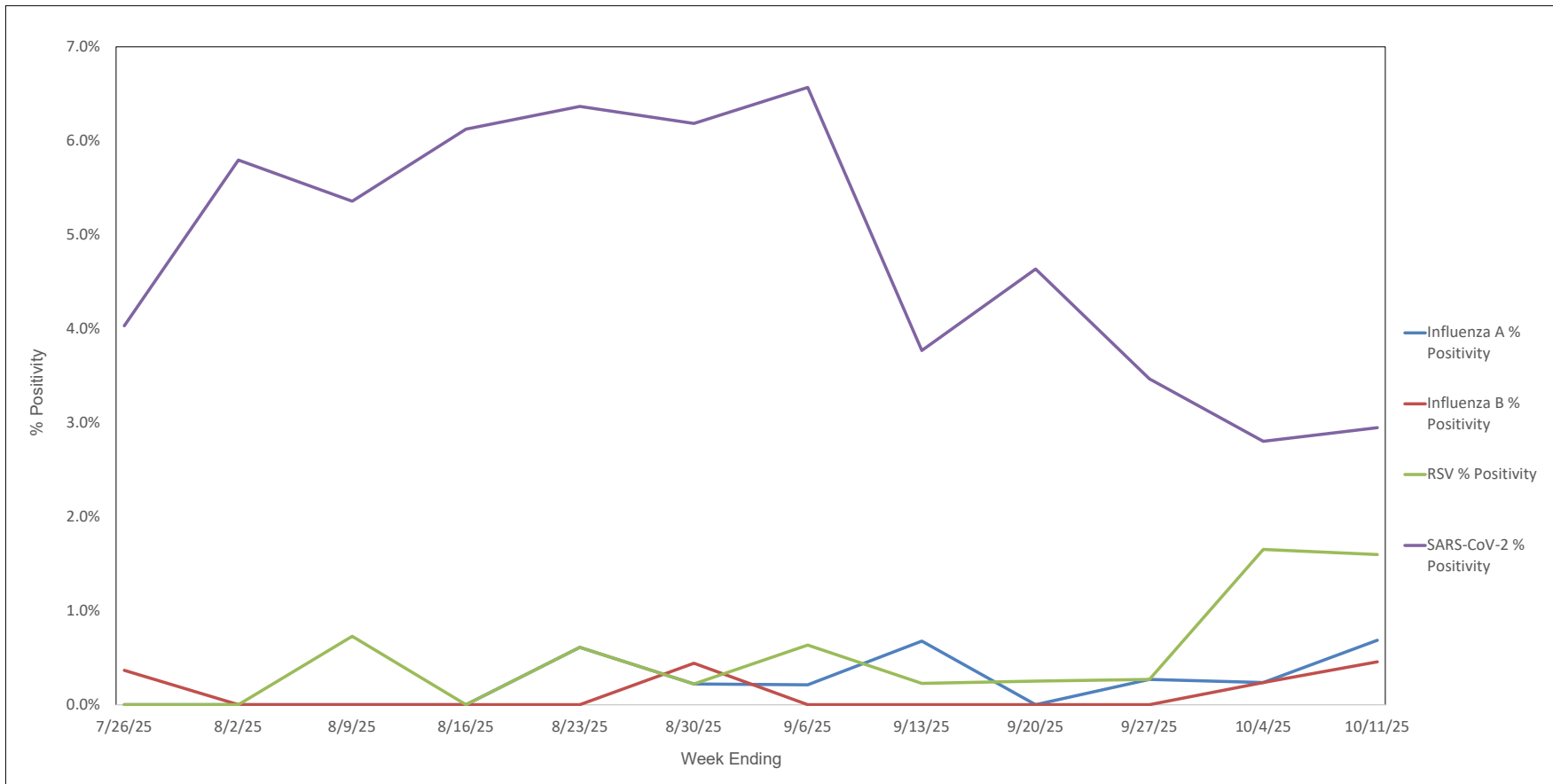
Now part of ADVOCATEHEALTH

## Weekly RSV PCR % Positivity by State - 7/26/25 thru 10/11/25





## Advocate Children's Hospital Influenza A, Influenza B, RSV, and SARS-CoV-2 PCR Positivity Rates - 7/26/25 thru 10/11/25





## AAH WI Hospitals (patients < 18 yrs old) Influenza A, Influenza B, RSV, and SARS-CoV-2 PCR Positivity Rates - 7/26/25 thru 10/11/25

